

BEAUARABA LIVING

Aged Care



Service Summary / Key Features

Who are we

Beauaraba Living is a provider of choice for rural care and accommodation services in the Darling Downs region.

Our mission is to provide compassionate and personalised care through community, respite and residential services whilst supporting the resident's independence and dignity.

Where are we

Beauaraba Living is located on the Darling Downs just 25 minutes south west of Toowoomba in the

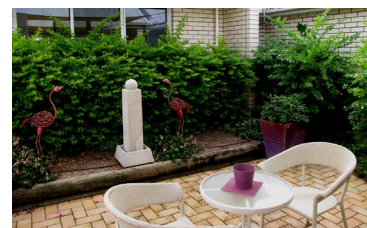


serene town of Pittsworth. Beauaraba Living is identified by picturesque views, landscaped gardens and rural ambience. With two major supermarkets, several coffee shops and cafes, as well as hotels that provide excellent accommodation and dining options close by, family members will feel most welcome when visiting Beauaraba Living.

This, coupled with our care team and our philosophy of *bringing happiness to everyday*, has built our reputation of delivering exceptional services in a friendly country environment.

What we offer

We recognise that every person is different as they come from varied backgrounds. Our care programs offer a variety of lifestyle choices to satisfy unique care recipients' needs. This encourages them to be actively involved in day to day life in ways they find meaningful, experiencing a better quality of life.

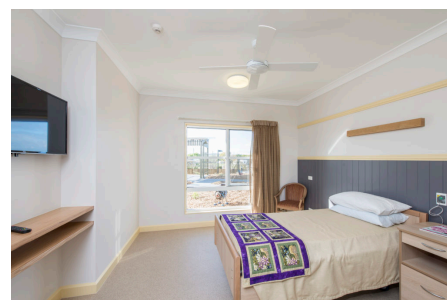


Our care team delivers skilled, timely and compassionate care to meet our resident's needs physically, spiritually, culturally and emotionally.

Our model of care encourages the active involvement of family and friends in everyday life and activities.

Our features

- Comfortably appointed ensuited rooms with built-in wardrobes and air conditioning. Many of our rooms have a northerly aspect, taking advantage of the warming winter sun. Residents are welcome to bring their own small items of furniture to make their room feel like home.
- Tastefully decorated and easily accessed lounge, dining, TV rooms and library are air conditioned for your comfort and provide excellent opportunities for social gatherings
- Delightful outdoor areas to relax, enjoy a chat or just spend some quiet time reflecting on the country views.



- 24 hour emergency call and RN support for nursing and medication management
- Lifestyle programs designed to enhance and promote wellbeing, including a gym with age appropriate equipment
- Our onsite medical centre, as well as an additional medical centre and pharmacies located in the heart of town, provides convenient and timely access to medical practitioners and medication
- Television and telephone connections to rooms are available.



We have a well-rounded menu providing a country fare of choice and variety

On site hairdressing service

Onsite service for all your personal laundry

Internet and email access is available at our kiosks or in the comfort of your room.

For the comfort and safety of all residents and staff **we are a non-smoking facility**

Contact us ...

- Enquiries forms are available (and enclosed)
- Talk to one of our representatives
- Inspections by appointment are welcome.
- Contact us on 07 4619 8422 or enquiries@beumarabaliving.org.au



Aged Care Fees and Pricing

Fees Schedule as from **01 October 2019** (indicative and subject to change)

Basic Daily Care Fee (for both permanent and respite)	\$51.63	As from 20 September 2019
Means Tested Care Fees	TBA	As determined and notified by DSS on entry

Accommodation Pricing as from 1 July 2019

Room Description	Refundable Accommodation Deposit (RAD)	Daily Accommodation Payment (DAP) *	Combination RAD/DAP
Shared Rooms	\$245,000	\$33.43	\$122,500
			\$16.71
The Lodge Rooms	\$310,000	\$42.30	\$155,000
			\$21.15
Premium Rooms	\$336,000	\$45.84	\$168,000
			\$22.92
The Interest Rate used is the Maximum Permissible Interest Rate (MPIR) current as at the Date of Entry. The Interest Rate used is current as at:		1/10/2019	4.98%

Low Means Residents

Those residents with insufficient assets to pay the full amount of the RAD may be eligible for additional government assistance.

... Bringing Happiness to Everyday ...